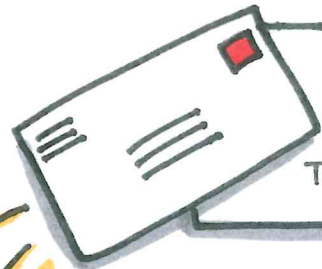


# UNDERSTANDING ENROLLMENT COUNSELING

## LOOK FOR THE LETTER

THE LOCAL AGING & DISABILITY RESOURCE CENTER (ADRC) WILL CONTACT YOU TO TALK ABOUT THE UP COMING CHANGES.



## DEADLINES

LONG TERM CARE SERVICES WILL BEGIN TO TRANSITION ON FEB. 1, 2018. THE ADRC WILL INFORM YOU OF THE MONTH YOU WILL TRANSITION & THE DEADLINE TO CHOOSE.



## FAMILY CARE AND PARTNERSHIP

**1** SELECT 1 WITH HELP FROM ADRC

**2** CHOOSE YOUR MCO

<b>FAMILY CARE</b> <input type="checkbox"/> MY CHOICE FAMILY CARE <input type="checkbox"/> CARE WISCONSIN	OR	<b>PARTNERSHIP</b> <input type="checkbox"/> CARE WISCONSIN <input type="checkbox"/> iCARE
---	----	---

**3** SIGN THE ENROLLMENT FORM WITH ADRC

**4** WAIT FOR A CALL BETWEEN 30 DAYS AFTER SIGNING THE FORM - UP TO 15 DAYS BEFORE YOUR ASSIGNED TRANSITION DATE IN 2018

**5** MAKE A DATE TO MEET & START MAKING YOUR SERVICE PLAN WITH YOUR MCO NO LATER THAN 10 DAYS AFTER YOUR ASSIGNED TRANSITION DATE.

**NOTE:** YOUR CURRENT SERVICES WILL CONTINUE BEYOND YOUR ASSIGNED TRANSITION DATE IN 2018 WHILE YOU MAKE YOUR PLAN WITH YOUR NEW MCO.

## CHOOSE ONE



YOU CAN CHANGE YOUR MIND AT ANY TIME!

## IRIS

**1** SELECT IRIS WITH HELP FROM ADRC

**2** SIGN IRIS REFERRAL FORM AT ADRC

**3** SELECT 1 IRIS CONSULTING AGENCY (ICA)

<input type="checkbox"/> PROGRESSIVE COMMUNITY SERVICES <input type="checkbox"/> CONNECTIONS (LUTHERN SOCIAL SERVICES)	<input type="checkbox"/> THE MANAGEMENT GROUP (TMG) <input type="checkbox"/> FIRST PERSON CARE CONSULTANTS
---	---

**4** WAIT FOR A CALL FROM YOUR ICA BETWEEN 3 DAYS - 2 WEEKS AFTER YOU SIGN UP

**5** YOUR ICA WILL HELP YOU CHOOSE AN IRIS CONSULTANT YOUR IRIS CONSULTANT WILL MEET WITH YOU IN ABOUT 10 DAYS

**6** CREATE YOUR IRIS PLAN WITH YOUR ICA. PLANS ARE USUALLY COMPLETED IN 30 DAYS - OR, A COUPLE WEEKS LONGER IF YOU NEED TO ASK THE STATE FOR A BUDGET AMENDMENT

THE IRIS CONSULTANT MAKES SURE YOUR PLANNED SERVICES WILL BE READY TO START ON YOUR APPROVED TRANSITION DATE IN 2018.

## QUESTIONS

FOR MORE INFORMATION CALL:

- AGING & DISABILITIES RESOURCE CENTER 608-240-7400
- DEPARTMENT OF HEALTH SERVICES 1-855-885-0287
- DEVELOPMENTAL DISABILITIES COALITION 608-206-1818